

**SINGLE-GANG BOXES
DIE CAST ALUMINUM**



Applications

- For use in branch circuit wiring in wet, damp, or dry locations
- May be used as a weatherproof junction box, or as a housing for receptacles, switches, and GFCI's

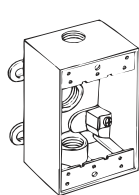
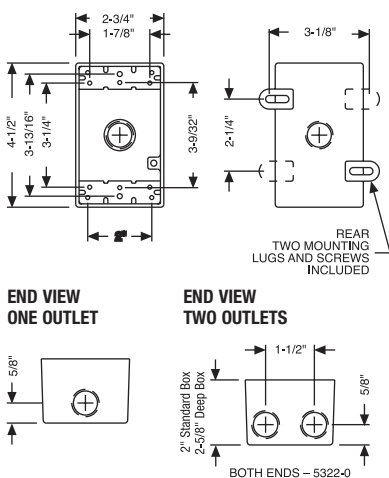
Product Features

- Reinforced connector outlets
- State-of-the-art powder coat finish
- Eight box mounting options with detachable lugs provided
- Two closure plugs included
- Ground screw installed
- Multi-lingual instructions in each package

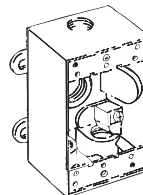
Compliances

- - Standard 514A
- - C22.2 No. 18
- NEMA 3R Rated

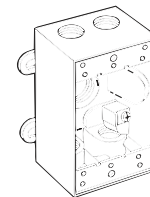
SINGLE-GANG BOXES: GENERAL DIMENSIONS



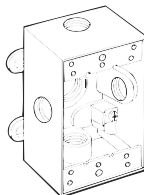
5320-0 TO 5320-7
5324-0 TO 5324-5



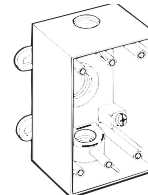
5321-0 TO
5321-7, 5330-0



5322-0, 5331-0



5323-0, 5332-0



5385-0 TO 5387-0

ORDERING INFORMATION - DIMENSIONS

2" DEEP, WITH LUGS - THREE THREADED OUTLETS - 4-1/2" x 2-3/4"						
CATALOG NUMBER	CUBIC IN.	DESCRIPTION		PKG. TYPE	STD. PKG.	UPC BAR CODE
		COLOR	OUTLETS			
5320-0	17.5	Gray	3-1/2"	Shrink	20	
5320-1	17.5	White	3-1/2"	Shrink	20	
5320-2	17.5	Bronze	3-1/2"	Shrink	20	
5320-5	17.5	Gray	3-1/2"	Carded	6	
5320-6	17.5	White	3-1/2"	Carded	6	
5320-7	17.5	Bronze	3-1/2"	Carded	6	
5324-0	17.0	Gray	3-3/4"	Shrink	20	
5324-5	17.0	Gray	3-3/4"	Carded	6	

2" DEEP, WITH LUGS - FOUR THREADED OUTLETS - 4-1/2" x 2-3/4"						
CATALOG NUMBER	CUBIC IN.	DESCRIPTION		PKG. TYPE	STD. PKG.	UPC BAR CODE
		COLOR	OUTLETS			
5321-0	17.0	Gray	4-1/2"	Shrink	20	
5321-1	17.0	White	4-1/2"	Shrink	20	
5321-2	17.0	Bronze	4-1/2"	Shrink	20	
5321-5	17.0	Gray	4-1/2"	Carded	6	
5321-6	17.0	White	4-1/2"	Carded	6	
5321-7	17.0	Bronze	4-1/2"	Carded	6	
5330-0	16.5	Gray	4-3/4"	Shrink	20	

2" DEEP, WITH LUGS - FIVE THREADED OUTLETS - 4-1/2" x 2-3/4"						
CATALOG NUMBER	CUBIC IN.	DESCRIPTION		PKG. TYPE	STD. PKG.	UPC BAR CODE
		COLOR	OUTLETS			
5322-0	16.5	Gray	5-1/2"	Shrink	20	
5331-0	16.0	Gray	5-3/4"	Shrink	20	
5323-0	17.0	Gray	5-1/2"	Shrink	20	
5332-0	16.5	Gray	5-3/4"	Shrink	20	

2-5/8" DEEP, WITH LUGS - THREE THREADED OUTLETS - 4-1/2" x 2-3/4"						
CATALOG NUMBER	CUBIC IN.	DESCRIPTION		PKG. TYPE	STD. PKG.	UPC BAR CODE
		COLOR	OUTLETS			
5385-0	21.3	Gray	3-1/2"	Shrink	15	
5386-0	21.3	Gray	3-3/4"	Shrink	15	
5387-0	21.3	Gray	3-1"	Shrink	15	



WEATHERPROOF BOXES,
COVERS AND LIGHTING